

# THE raphael™ COLLECTION

For her...For him  
...For eternity



The Ultimate Bridal,  
Wedding & Eternity Collection



THE  
**raphael**<sup>™</sup>  
COLLECTION

**T**he Raphael Collection is brought to you by one of Europe's leading international jewellery design houses and third generation diamantaires, established in London's Hatton Garden, since 1967.

**Our exceptionally skilled team of artisans use the latest state-of-the-art technology coupled with traditional hand made techniques to bring you one of the finest collections of diamond eternity, bridal and wedding jewellery available throughout the world today.**

**Our elegant, timeless and exquisite designs are only available at selected quality fine jewellers.**

**To experience the beauty and magnificent craftsmanship of The Raphael Collection, please contact us to locate your nearest approved stockist.**

All items in this brochure are larger than actual size to show detail.

Ladies' Bridal & Eternity Rings . . . . .	2–27
Ladies' Earrings & Pendants . . . . .	28–31
Tennis Bracelets . . . . .	32
Bangles & Cuffs . . . . .	32–33
Men's Wedding Rings . . . . .	34–37
Your Guide To Buying Diamonds . . . . .	39

 PRINCESS CUT FULL ETERNITY



FET 885  
0.62ct

FET 886  
0.75ct

FET 887  
1.00ct

FET 881  
1.30ct

 PRINCESS CUT OFFSET FULL ETERNITY



FET 946  
0.54ct

FET 882  
1.60ct

FET 1088  
2.00ct

FET 947  
1.00ct  
4.2mm width

FET 884  
3.00ct

FET 1140  
1.00ct  
4.5mm width

FET 1135  
1.55ct

FET 1048  
1.00ct  
4.5mm width  
Deeper gauge



 PRINCESS CUT HALF ETERNITY



HET 1174  
0.20ct

HET 928  
0.25ct

HET 1157  
0.33ct

HET 993  
0.50ct  
50% set

HET 1301  
0.75ct  
50% set

HET 930  
0.75ct  
40% set

HET 1116  
0.85ct

HET 929  
0.50ct  
40% set

HET 931  
1.00ct

HET 1165  
1.50ct

 PRINCESS CUT  
OFFSET HALF ETERNITY



HET 950  
0.25ct

HET 951  
0.50ct  
Flat Profile

HET 1315  
0.40ct  
Court Profile

—ROUND BRILLIANT FULL ETERNITY

FET 1166  
0.41ct  
3.2mm width

FET 1040  
0.35ct

FET 888  
0.41ct  
2.6mm width

FET 1112  
0.41ct

FET 889  
0.50ct  
3mm width

FET 1202  
0.50ct  
3.2mm width

FET 890  
0.88ct

FET 891  
1.04ct

FET 892  
1.30ct

FET 964  
0.33ct each

white  
yellow  
rose

FET 893  
1.75ct

FET 894  
2.00ct

FET 895  
2.54ct

FET 896  
3.00ct

ROUND BRILLIANT HALF ETERNITY



HET 936  
0.22ct

HET 935  
0.15ct

HET 1045  
0.20ct

HET 1046  
0.20ct

HET 1240  
0.25ct

HET 1145  
0.42ct

HET 1167  
0.50ct  
(11 stone)

HET 997  
0.33ct

HET 1111  
0.35ct

HET 937  
0.50ct  
(14 stone)

HET 939  
0.78ct

HET 1310  
0.50ct  
(15 stone)

HET 938  
0.66ct

HET 940  
1.00ct

HET 1193  
0.70ct

HET 1323  
1.50ct

 BAGUETTE CUT FULL ETERNITY

FET 921  
1.25ct

FET 920  
1.05ct

FET 922  
1.50ct

FET 1179  
2.00ct

FET 897  
0.60ct

FET 898  
0.75ct

FET 979  
3.10ct

FET 899  
1.00ct

FET 900  
1.25ct

FET 901  
1.50ct

FET 1299  
2.00ct





 BAGUETTE CUT HALF ETERNITY



HET 963  
0.26ct



HET 924  
0.33ct



HET 925  
0.56ct



HET 926  
0.76ct



HET 927  
1.00ct



HET 1171  
0.21ct



HET 1189  
1.50ct



HET 942  
0.30ct



HET 1190  
2.00ct



HET 941  
0.30ct



HET 1019  
0.50ct



HET 1020  
0.75ct



HET 1021  
1.00ct

 ROUND & BAGUETTE FULL ETERNITY

FET 903  
1.15ct

FET 904  
1.53ct

FET 902  
0.50ct

FET 905  
2.00ct

FET 907  
3.00ct

FET 1062  
0.60ct

FET 1060  
0.85ct

FET 1059  
1.05ct

FET 1058  
1.25ct





 ROUND & BAGUETTE HALF ETERNITY



HET 1142  
0.15ct



HET 1143  
0.25ct  
40% set



HET 1188  
0.25ct  
50% set



HET 995  
0.33ct

HET 1083  
0.30ct



HET 908  
0.50ct  
13 stone



HET 1109  
0.50ct  
15 stone



HET 1080  
0.55ct



HET 909  
0.76ct



HET 910  
1.08ct



HET 1144  
1.50ct





## PRINCESS & BAGUETTE FULL ETERNITY

FET 913  
1.51ct



FET 912  
1.00ct



FET 911  
0.53ct

FET 914  
2.00ct



## PRINCESS & BAGUETTE HALF ETERNITY

FET 916  
3.00ct



HET 996  
0.30ct



HET 917  
0.50ct



## PRINCESS & BAGUETTE INVISIBLE SET HALF ETERNITY

HET 989  
0.60ct



HET 918  
0.75ct



HET 990  
1.00ct



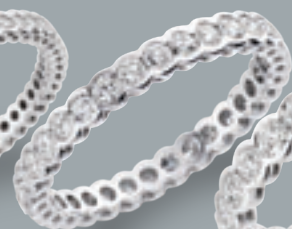
HET 919  
1.00ct



 RUBOVER FULL ETERNITY



FET 1217  
0.35ct



FET 1218  
1.00ct



FET 1219  
1.50ct



FET 1220  
2.00ct

FLUSH CHANNEL  
ETERNITY RINGS



HET 1312  
0.20ct



HET 1226  
0.25ct

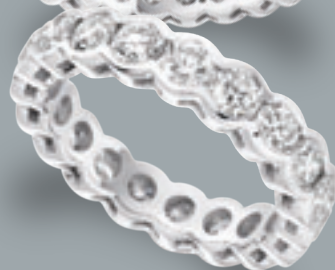


FET 1313  
0.50ct



FET 1227  
0.60ct

FET 1321  
3.00ct



FET 1332  
1.00ct

WIDE BAND  
FULL ETERNITY



FET 1239  
0.60ct  
4.25mm wide



FET 1108  
1.00ct  
4.50mm wide

ROUND BRILLIANT OFFSET FULL ETERNITY



FET 1126  
0.26ct  
Court Profile

FET 1151  
0.26ct  
Flat Profile

FET 943  
0.31ct

FET 1047  
0.45ct

FET 944A  
0.51ct

FET 1125  
0.50ct  
Court Profile

FET 944B  
0.55ct

FET 1150  
0.50ct  
Flat Profile

TENSION SET  
FULL ETERNITY

FET 1261  
0.18ct

FET 1181  
0.55ct

FET 1049  
1.00ct

FET 1262  
0.42ct



ROUND BRILLIANT OFFSET HALF ETERNITY



HET 1194  
0.15ct

HET 1186  
0.20ct

HET 1127  
0.12ct  
Court Profile

HET 1152  
0.12ct  
Flat Profile

DIAGONAL WAVE FULL ETERNITY



FET 985  
1.50ct

HET 1192  
0.20ct

HET 1124  
0.25ct  
Court Profile

FET 986  
0.77ct

HET 1176  
0.25ct  
Slight Court Profile

HET 1149  
0.25ct  
Flat Profile

FET 1158  
1.55ct

HET 948  
0.26ct

HET 1051  
0.50ct

## DOUBLE ROW INVISIBLE SET FULL ETERNITY



FET 1133  
2.05ct



FET 1134  
3.15ct



FET 1198  
2.50ct

## DOUBLE ROW FULL ETERNITY



FET 932  
1.50ct



FET 933  
1.56ct



FET 934  
1.00ct

FET 992  
0.55ct

FET 983  
0.50ct



FET 984  
1.00ct



## DOUBLE ROW INVISIBLE SET HALF ETERNITY



HET 987  
0.60ct



HET 988  
1.00ct

HET 1077  
0.75ct



HET 1078  
0.75ct



## DOUBLE ROW HALF ETERNITY

HET 1177  
0.25ct



HET 1322  
0.25ct



HET 1136  
0.26ct

HET 1079  
0.55ct



## TRIPLE ROW HALF ETERNITY



HET 1038  
0.45ct



# The Raphael Cut™

**I**ntroducing the new signature Raphael Cut, a cut that expresses sophistication, beauty and individuality.

It's unique cut gives shimmering brilliance, fire and scintillation. All Raphael Cut diamonds are E/F colour and VVS clarity.



Ask your jeweller  
to share the beauty of  
The Raphael Cut™ with you.

**The Difference Is Clear!**

 — RAPHAEL CUT™ FULL ETERNITY

FETRC 1088  
2.00ct

FETRC 887  
1.00ct

FETRC 884  
3.00ct

FETRC 932  
1.50ct

 — RAPHAEL CUT™  
HALF ETERNITY

HETRC 928  
0.25ct

FETRC 1103  
1.50ct

HETRC 930  
0.75ct

HETRC 993  
0.50ct

HETRC 929  
0.50ct

HETRC 1102  
0.50ct

HETRC 931  
1.00ct

HETRC 1104  
1.00ct

www.theraphaelcollection.com

## FULL ETERNITY BAR SET



FET 1025  
1.00ct



FET 1031  
1.00ct



FET 1032  
1.50ct

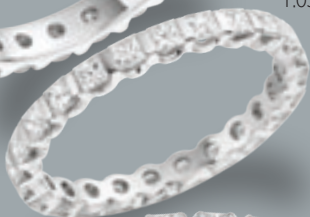
FET 1026  
1.05ct



FET 1223  
1.00ct



FET 1224  
2.00ct



FET 1103  
1.50ct

## MILGRAIN CHANNEL FULL ETERNITY

white  
yellow  
rose



FET 1314  
0.33ct each

## MILGRAIN CHANNEL HALF ETERNITY



HET 981  
0.20ct



HET 1183  
0.25ct

## HALF ETERNITY BAR SET



HET 1035  
0.50ct



HET 1036  
0.75ct



HET 1196  
0.50ct



HET 1102  
0.50ct



HET 1104  
1.00ct



HET 1221  
0.50ct



HET 1285  
0.50ct



HET 1284  
0.75ct



HET 1222  
1.00ct



HET 1281  
0.30ct



HET 1282  
0.40ct



HET 1084  
0.50ct



HET 1085  
0.75ct



## CHANNEL SET CENTRE WITH DIAMOND EDGED MICRO PAVÉ SETTING

HET 1295  
1.25ct

FET 1293  
1.50ct

FET 1291  
2.80ct



FET 1298  
3.60ct

FET 1296  
2.60ct

## GRAIN SET FULL ETERNITY



FET 1043  
0.30ct

FET 1027  
0.40ct

FET 1028  
1.00ct

FET 1029  
2.00ct

## GRAIN SET HALF ETERNITY



HET 1044  
0.15ct

HET 1041  
0.17ct

HET 1037  
0.60ct



## DIAMOND EDGED ETERNITY RINGS

FET 1092  
0.55ct  
Full set band

FET 1105  
0.55ct

HET 1191  
0.26ct  
Half set band

FET 1106  
0.55ct

FET 1155  
1.00ct

HET 1253  
0.40ct  
Half set band

FET 1091  
0.80ct  
Full set band

FET 1154  
2.00ct



## FULL ETERNITY CLAW SET

FET 1033  
1.00ct

FET 1229  
0.55ct

FET 1022  
0.75ct

FET 1294  
0.75ct

FET 1034  
2.00ct

FET 1300  
3.00ct

FET 1141  
1.50ct

FET 1075  
0.80ct

## FLUSH SET FULL ETERNITY

FET 1115  
3.10ct

FET 1113  
0.24ct



## MARQUISE CUT FULL ETERNITY

FET 1197  
1.50ct



## HALF ETERNITY CLAW SET



HET 462  
0.27ct



HET 463  
0.53ct



HET 793  
0.78ct



HET 464  
1.00ct



HET 1099  
0.75ct



HET 1100  
1.00ct  
7 stone



HET 1101  
1.00ct  
9 stone



HET 1087  
1.00ct  
10 stone



HET 1096  
0.25ct



HET 1023  
0.33ct



HET 1097  
0.33ct



HET 1086  
0.50ct  
13 stone



HET 1098  
0.50ct  
11 stone



HET 1286  
0.55ct



HET 1076  
0.40ct

# MICRO PAVÉ FULL ETERNITY



FET 1147  
1.25ct



FET 1184  
1.56ct



FET 1094  
2.00ct



FET 1093  
3.00ct



FET 1118  
2.25ct



FET 1095  
3.10ct



FET 1131  
3.00ct



FET 991  
1.55ct



FET 982  
3.10ct



## MICRO PAVÉ HALF ETERNITY



HET 1017  
0.75ct



HET 1230  
1.25ct



HET 1237  
0.75ct



HET 1117  
1.05ct



HET 1236  
1.10ct



HET 1052  
2.25ct

## TRIPLE ROW FULL ETERNITY

FET 1039  
1.00ct



HET 1276  
1.00ct

FET 1132  
3.00ct



## SHAPED-TO-FIT ETERNITY RINGS



### BESPOKE SHAPED-TO-FIT SERVICE

Ask your jeweller about having a bespoke shaped-to-fit ring made to perfectly compliment your engagement ring.



# THE TR:LOGY COLLECTION



TRL 1072  
0.55ct



TRL 1073  
0.75ct



TRL 1074  
1.00ct



TRL 1067  
0.26ct



TRL 1068  
0.55ct

TRL 1069  
0.85ct



TRL 1070  
1.00ct



TRL 1071  
1.55ct



tr:logy

 PRINCESS CUT EARRINGS



EE 161  
0.50ct



EE 162  
1.00ct



EE 163  
1.50ct

 ROUND BRILLIANT CUT EARRINGS




EE 205  
0.33ct



EE 207  
0.55ct



EE 213  
0.76ct

 BAGUETTE CUT EARRINGS




EE 206  
0.25ct



EE 208  
0.55ct



EE 214  
0.75ct

 ROUND & BAGUETTE CUT EARRINGS



EE 209  
0.55ct




EE 215  
0.80ct



EE 224  
1.00ct



EE 225  
1.50ct

 PRINCESS & BAGUETTE CUT EARRINGS



EE 210  
0.75ct



EE 216  
1.10ct

INVISIBLE SET EARRINGS



EE 212  
1.00ct

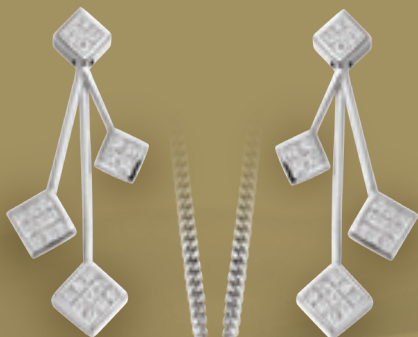


EE 211  
1.00ct



EE 218  
1.35ct

# PENDANT & EARRING SETS



EE 145  
1.10ct

PE 145  
0.55ct



EE 120  
0.55ct

PE 142  
0.25ct



EE 148  
0.30ct

PE 148  
0.15ct



EE 221  
0.85ct



PE 014  
1.10ct



EE 234  
0.65ct



EE 122  
1.25ct



PE 149  
0.35ct



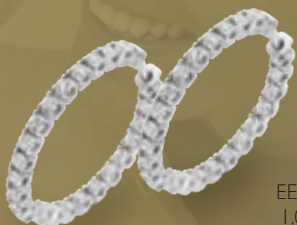
EE 188  
1.00ct



PE 138  
0.62ct



## PAVÉ SET EARRINGS



EE 230  
1.00ct



EE 229  
1.50ct



EE 231  
2.00ct



EE 223  
2.75ct



 PRINCESS CUT TENNIS BRACELET



Available in the following diamond weights:

BE 148	BE 147	BE 149
4.50ct	6.50ct	8.50ct

BANGLES & CUFFS



BG 151  
2.10ct

BG 155  
1.75ct

CU 261  
2.00ct

## BANGLES & CUFFS

BG 111  
1.50ct

BG 128  
2.00ct

BG 152  
1.50ct

BG 153  
1.30ct

BG 154  
1.50ct

BG 156  
2.35ct

# THE raphael™ COLLECTION



*The Ultimate Range For Him*

- ◆ Palladium
- ◆ Platinum
- ◆ 18ct Gold

*The Ultimate Range For Him*



GE 1107  
0.06ct



GE 1110  
0.08ct



GE 1146  
1.00ct



GE 1271  
0.06ct



GE 1269  
0.07ct



GE 1270  
0.09ct



GE 1259  
0.22ct



GE 1272  
0.12ct



*The Ultimate Range For Him*



GE 1277  
0.10ct



GE 1279  
0.15ct



GE 1278  
0.22ct



GE 1274  
0.33ct



GE 1275  
0.36ct



GE 1260  
0.15ct



GE 1256  
0.06ct



GE 1267  
0.07ct



GE 1273  
0.10ct

*The Ultimate Range For Him*

GE 1268  
0.15ct



GE 1266  
0.05ct

GE 1255  
0.04ct

GE 1258  
0.20ct

GE 1263  
0.10ct

GE 1257  
0.18ct



GE 1225  
0.20ct



GE 1280  
0.15ct



GE 1264  
0.08ct



GE 1265  
0.30ct





# THE raphael™ COLLECTION

## ABOUT OUR DIAMONDS

Raphael Collection™ diamonds are carefully selected for their cut, colour and clarity.

We use a minimum standard of F/G Colour, VS Clarity to give every ring maximum fire and brilliance.

The Raphael Collection™ is available in:  
◆ Platinum ◆ 18ct Gold ◆ Palladium 950

Rings can be custom made with a satin or mirror finish, or a combination of both.

## ABOUT OUR PROFILES

Raphael Collection™ diamond rings have an inner court Profile ensuring maximum comfort fit.

State-of-the-art CNC rolling technology is used to create our seamless rings to give maximum tensile strength.

*We only source conflict free diamonds.*

## THE 4 C's

### A GUIDE TO BUYING DIAMOND JEWELLERY

#### CARAT

Diamonds are measured in terms of weight, not size. One carat is equal to 100 points. Two diamonds of equal weight can have very different values, because the quality is still determined by the colour, clarity and cut.



#### CUT

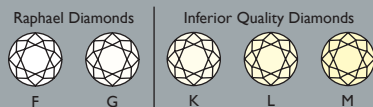
To transform the diamond into a beautiful gem, it is cut with precise facets. Well cut diamonds have amazing brilliance and fire. This is caused by light reflecting off the diamond's surfaces. The key to desirable fire and brilliance is proportion. Light striking a shallow cut diamond or a diamond cut too deep is lost through the sides or bottom and is not reflected back to the top.



#### COLOUR

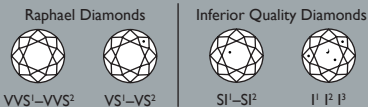
While many diamonds appear colourless or white, they may actually have subtle yellow or brown tones that can be detected when comparing diamonds side by side.

Colourless diamonds are the rarest and most valuable of all.



#### CLARITY

Clarity is an indication of a diamond's purity, determined by naturally occurring internal characteristics called inclusions. These characteristics are sometimes not visible to the naked eye and they are what make each diamond unique. The most highly prized diamonds are those with no inclusions, otherwise known as flawless diamonds.











THE  
raphael™  
COLLECTION

**APPROVED STOCKIST**

[www.theraphaelcollection.com](http://www.theraphaelcollection.com)